

At the heart of a new community

# westpark

Issue 4 Summer 2005



Bussey & Armstrong Projects

COUNTDOWN TO A VIBRANT NEW COMMUNITY • CELEBRATING THE HANDOVER  
OF THE NEW PARK • DARLINGTON MOWDEN RFC – A CLUB FOR EVERYONE!  
• DARLINGTON'S CREATIVE YOUTH • ALDERMAN LEACH PRIMARY SCHOOL

## Instant appeal of art and nature

WESTPARK is Darlington's latest and most exciting countryside site so far and is about to be handed over to the public.

The park has been designed to encapsulate all the new thinking around urban fringe countryside. It has interwoven a rich mix of wildlife habitats, more reminiscent of remote nature reserves with a collection of sympathetic artistic features that fully complement the natural surroundings. This approach gives the park an instant appeal and helps people around the site discovering things as they go. The three rare species originally found on the old spoil tip, clinging to a precarious existence, inspired the poetry plan for the site. The poetry can be found etched onto the features giving the visitor to the park hours of fun searching out the different elements.

Darlington's 'wildspaces' as they have come to be known are rich and varied. They range from disused allotment sites now home to colourful dragonflies and butterflies. Redundant railway sidings such as Brinkburn Local Nature Reserve and Geneva Woods of Neasham Road are both alive with song birds, amphibians and small mammals. They also include new community woodlands such as Skertingham and South Burdon, both offering extensive open spaces for quiet recreation and more energetic exercise.

WestPark explores the role of the urban fringe countryside site to the full. With the sculptures, the poetry, the smell and colour of the wildflowers, the sound of the wind in the trees and the views from the hill tops of the surrounding town and countryside, visitors to the park will enjoy a multi sensory experience. Having such a facility right on their doorsteps should encourage people to venture to the wider countryside with greater confidence. It is envisaged that there will be additional features on the park in the coming years including a visitors centre that will explain the parks history and design and an exciting down hill mountain bike track for those seeking more adventurous entertainment.

**Rob George**  
Principal Countryside & Rights of Way Officer  
Darlington Borough Council  
Development & Environment  
Hopetown House, Darlington, DL3 6ED  
Tel: 01325 388637 [internal extension: 2637]  
Email: robert.george@darlington.gov.uk

## Countdown to a vibrant new community

IS IT REALLY a year since the last issue of WestPark magazine? With so much underway, the project is taking on its own unique and lively identity.

WestPark Priority Services Hospital opened in November 2004 and is rapidly establishing itself in its fresh and accessible environment.

This February we welcomed Alderman Leach Primary School to WestPark Village – first arrival and an essential focal point for village life.

After a year completing the park entrances and various exciting arts projects on 21st June 2005 Darlington dignitaries celebrated the completion of the town's first new park for over a century.

More development work starts soon in the WestPark Community Village, including building 'The White Heifer That Travelled', a Pathfinder Inns pub. If that hostelry isn't open by Christmas 2005 the locals will want to know why!

The village centre, convenience store and retail units with apartments above will be completed in 2006. The doctor's surgery, children's nursery, residential care home and community facilities will all follow in short order.

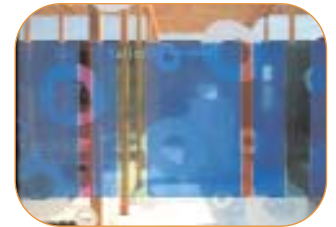
As you will read, Darlington Mowden Rugby Club continues to progress in the National Rugby League and expect to start playing at their new WestPark home in September 2006.

Finally we welcome all new residents to WestPark, to be joined by Bussey & Armstrong Homes residents in 2006.

**For news, services and residential opportunities at WestPark, explore our website: [www.busseyarmstrong.co.uk](http://www.busseyarmstrong.co.uk)**

### TONY COOPER

Director, Bussey & Armstrong Projects



## Inside

Celebrating the handover of the new park	3
Darlington Mowden Park RFC	4
Darlington's creative youth	5
Alderman Leach Primary School	7
Up & Running with The Tees Forest	8
Bringing Business & Arts Together	11
Caring Sharing Daring	12





# Celebrating the handover of the first new Park in Darlington for over 100 years

WESTPARK IS the first new park to be opened in Darlington for over 100 years. It has been designed to encapsulate all the new thinking around urban fringe countryside, and has interwoven a rich mix of wildlife habitats more reminiscent of remote nature reserves with art features usually characteristic of more urban settings. This approach gives the park an instant appeal where the natural look of the tree planting and wildflower meadows are complemented by the metal and stone sculptures that are strategically placed throughout the site.

The whole design process has been informed by art and nature working together. The three rare species originally found on the old spoil tip, clinging to a precarious existence, inspired the poetry plan for the site. The poetry can be found etched onto the features giving the visitor to the park hours of fun searching out the different elements.

With the sculptures, the poetry, the smell and colour of the wildflowers, the sound of the wind in the trees and the views from the hilltop of the surrounding town and countryside, visitors to the park will enjoy a multi-sensory experience.

To celebrate the official handover of the park from the local developer Mr. Tony Cooper to the council VIP guests and over 150 local school children were invited to a 'Picnic in the Park'

The Worshipful the Mayor Councillor Stella Robson welcomed everyone into the park this was followed by a guided tour by Tony Cooper and Bill Herbert the lead poet who highlighted the inspiration for the design concept of the park and the cultural elements within it. Tony Cooper then officially handed ownership of the park to Councillor Lee Vasey, of Darlington Borough Council Leisure and Arts.

Early evening enabled local Residents to enjoy a BBQ and music by Humersknott Secondary School steel band and a programme of activities for young people. Community Service's Leisure and Arts team arranged a fun packed programme of activities on the Multi Use Games Area located at Alderman and Leach school adjacent to the Park

The evening also provided the opportunity for local residents and young people to give their views on the development of WestPark and what they would like to see in the proposals to build a Village



Hall or Community Centre within the WestPark development.

It is envisaged that there will be further additional features on the park in the coming years including a visitors centre that will explain the parks history and design and an exciting down hill mountain bike track for those seeking more adventurous entertainment.





# Darlington Mowden Park RFC – a club for everyone!!

ALL THE readers of WestPark magazine that have been following the exciting developments that have taken place at WestPark since the last issue, the completion of the hospital, the occupation of the school, the ever-expanding housing development and the continuous work on the infrastructure and surrounding environs would be forgiven for asking, "Where is the rugby club?". Despite our optimism back in August 2004, the negotiations between the numerous parties interested in our move continued to move at a snail's pace which, apparently, is not uncommon for complex property transactions, especially those involving sporting use.

Darlington Mowden Park RFC is determined that it will happen.

We hope that our magnificent new clubhouse will appeal to all WestPark residents, no matter what their age, sex or interest in sport and will become a social focal point for the whole community. For the Rugby Union enthusiasts we shall continue to offer rugby for all ages and abilities. Our Mini and Junior sections are booming but always welcome new players, coaches and helpers and we also have a tremendously strong women's rugby section. The First XV have consolidated their place in the National Leagues and once again are looking to challenge for promotion in the forthcoming season. We also run a Second and Third XV whom play competitive rugby with an old-fashioned rugby ethos and would be happy to introduce any interested adults, either ex-players or complete novices, to the greatest team sport on earth.



However just as everyone concerned was becoming extremely frustrated we managed, with the generous help of Bussey & Armstrong Projects Limited, to breakthrough the logjam of detail and finally agree the terms of our move. As we write our respective lawyers are drawing up contracts and at last there is hope that our optimism is not misplaced and we can commence playing rugby on our new site by September 2006. In order to achieve this ambitious target we shall need a little luck and a lot of hard work but everybody at

We intend to become an established part of the WestPark "family" and would love to see each and everyone of you at our new clubhouse and grounds for our inaugural match in September 2006.



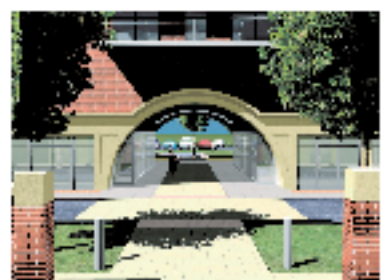
## Browne Smith Baker Architects and Masterplanners working with Bussey and Armstrong at West Park

Browne Smith Baker provides creative ideas for buildings and land that add lifelines of value to built environments like the exciting West Park development by Bussey and Armstrong Projects.

Since the inception of the project in 2003, we've worked in partnership with Bussey and Armstrong Projects to deliver Masterplans for West Park and its Community Villages. Browne Smith Baker also designed the Community Village Square building and proposed Darlington Mowden Park Rugby Club (pictured right).

We hope the results testify that we've listened carefully to Bussey and Armstrong to prepare rewarding and socially responsible architectural solutions combining creativity and technical expertise. Our aim has been to bring fair and thoughtful commitment to the West Park initiative.

We promote energy efficient, sustainable building methods and materials selected from renewable sources.



[www.brownesmithbaker.com](http://www.brownesmithbaker.com)

Tel: 01325 462345 | Fax: 01325 381419

1st Floor, Norton House, Norton Road, Darlington DL1 4PT



# Darlington's creative youth



## Dingy

I'm dull and unpretty  
and have no friends.  
Nobody likes me,  
My colours don't blend  
But it's the middle of summer,  
There's a nice warm breeze,  
So what do I care,  
With my head in the trees!

A selection of poems by  
the pupils that came out  
of the project

## Fast as trains

The people of Darlington  
move as fast as trains,  
shunt through shops;  
push you around.

The people of Darlington,  
chitter chatter,  
chitter chatter,  
chitter chatter.

The people of Darlington  
whistle to get your attention.  
Their houses are carriages  
in Railway streets.

## Night Butterfly

She hides in WestPark long grass,  
Hums in its blades,  
Comes out to play at night;  
feeding, fluttering.

She's fooled the mighty frog,  
Dodged its grasp of death,  
Flutters in the breaking dawn  
Back to WestPark long grass.

## Shadows

The sun's heat burns down on butterfly wings  
Casts a crystal hint on dewy grass.  
Velvet pollen sticks to butterfly feet.

## Trailblazers

My people travel with the flow  
of fashion and science.  
They advance in electricity,  
fire and chemistry.

My people have furnished the  
world with cattle,  
never seen by foreign eyes before.  
My people have made stations and trains  
they have helped people to travel  
all over the world,  
and yet they slouch like hunchbacks  
instead of standing tall.

## How we are

My people stride in soft lines;  
They're as tender as wool;  
Strong as iron trains  
Inspired by Pease,  
my people whistle confidently;  
offer their hands in kindness.

LAST YEAR, novelists, poets, playwrights, film-makers, radio producers and musicians worked in five Darlington schools to encourage pupils to respond creatively to Darlington and the WestPark development. In a project managed and devised by New Writing North working in partnership with Creative Partnerships Tees Valley, Bussey and Armstrong, Arts and Business and Northern Film and Media, young people from Darlington created films, a radio play, a poetry anthology and helped create pieces of public art in their school.

At Branksome Comprehensive pupils from Year 8 worked with poet Maureen Almond. They were encouraged to write about WestPark and Darlington: its stories, history, its industrial and agricultural legacy and its ecology, including WestPark's three emblematic creatures – the dingy skipper, the little ringed plover and the water vole.

For further details contact Anna Summerford at  
New Writing North. Tel: 0191 488 8580



**NEW**

Family Pub Coming to West Park

# The White Heifer That Travelled

will be opening  
Spring/Summer 2006



More than **£2 million** is being invested in this **new family-friendly pub**

- Extensive menu
- Wide range of specials
- Excellent service



West Auldland Road, West Park, Darlington, DL3 6HX

**BM** BLACKBURN  
MARSHALL  
CONSTRUCTION LTD

As a local building contractor we are proud to be involved with this prestigious development at West Park and in particular the construction of the Community Village. This is a high quality mixture of residential, commercial and retail space and will be a significant addition to the site when completed.



Wooler Street, Darlington, Co. Durham DL1 1RQ  
Tel: (01325) 352 109 • Fax: (01325) 488 146  
Email: sales@blackburnmarshallconst.co.uk

## Dunhouse natural stone

Supplier of Sculptors to the  
Great Park Development.



There is no real substitute for natural stone. It has a character and a life of its own which cannot be matched by cast products. If you are looking to improve the environment you live in and add value to your home, then the natural choice is natural stone.

- Boundary Stems
- Crazy Paving
- Granite Sills
- Sills
- Trophies
- Bed Beds
- Fountain Stems
- Coping
- Quarry Rubble
- Gutter Rubble

If you need any more information about using natural stone for your project or in your home please contact us on:

**01833 660 208**

email: sales@dunhouse.co.uk  
web site: www.dunhouse.co.uk

## Balfour Beatty Construction

Balfour Beatty Construction were delighted to work in partnership with the NHS for the successful completion of the new Mental Health Unit at West Park, Darlington.

### Building People

Due to continued expansion we require highly motivated and enthusiastic people for our North Eastern Yorkshire Division. We are looking for Quality Surveyors of all levels, and site management from Engineer to Project Manager.

If you are looking for a rewarding and challenging opportunity and would like to work for an organisation committed to long term development please send a CV, including current salary to Personnel Office, Balfour Beatty Construction Limited, Cavendish House, Cross Street, Sile, Harrogate, HG8 7BU.

[www.balfourbeattyconstruction.co.uk](http://www.balfourbeattyconstruction.co.uk)



Balfour Beatty Companies

Balfour Beatty plc is an equal opportunity employer

# Alderman Leach Primary School

ON 21 FEBRUARY 2005 the new Alderman Leach Primary School, located in the heart of the WestPark community, officially opened its doors for the first time. Children were welcomed back to state-of-the-art accommodation incorporating the latest IT technology, interactive whiteboards, a multi-use games area, football pitch and a hall with a sprung floor making it suitable for recreational activities such as badminton.

The school was official opened by Alan Milburn MP on 18 March 2005, joined by the Mayor of Darlington, key officials, staff, parents and pupils. Visitors were provided with a tour of the building and were able to see the children's work on display throughout the school. A spectacular balloon launch, in the schools colours, closed the ceremony in style.

The 315-place primary school including a 26 place Nursery unit is already full and anticipates having a roll of 315 in September. The school also benefits from the co-location of WestPark Day Nursery, which is a privately run organisation using the schools facilities to offer wrap-around childcare from 8am – 6pm and a holiday club.

For further details contact Catherine Thompson, Head Teacher on 01325 380 792





# Something for everyone at WestPark, Darlington

THE FIRST showhome has opened at Bellway's WestPark development in Darlington, letting homebuyers see more of the leading housebuilder's contemporary living style.

Spanning across two sites, Forest Green and WestPark, there really is something for everyone with prices ranging from £145,000 for a three bedroom Arran semi-detached property, to a very spacious five-bedroom detached Westwood home at £260,000. Plans are also in place to include a small number of two-bedroom apartments at the development.

The first showhome has just opened on site, offering visitors a chance to explore tips for styling and layout. One of Bellway's newest house-types, the Kirby, is a large four bedroom property carefully planned over two storeys.

The ground floor comprises entrance hall, a very spacious lounge, a separate dining room and a large fully fitted kitchen with open plan breakfast area and adjoining family room. Both the family room and breakfast area have French doors leading to the landscaped rear garden and a utility room and w/c complete the ground floor layout.

On the first floor is a large master bedroom, complete with adjoining dressing room and en-suite shower room. Three further double bedrooms share the large family bathroom, also on this floor.

On the outskirts of Darlington, close to the A68 and minutes from the A1 with schools and colleges nearby, WestPark is an ideal location for any homebuyer. Once finished, this new neighbourhood will incorporate a medical centre, local shops and also a brand new adjacent rugby club. A central area of landscaped parkland and planted area complete the development, packed with more than 40,000 shrubs and trees.

## Up and running

AT LAST the realisation of a dream in the transformation of industrial wasteland to an attractive green space and community woodland at WestPark in Darlington. The time has finally arrived to hand over the site to the council and open to the public so that everyone can enjoy the wonderful facilities, sculptures and landscaping of Darlington's newest urban park.

With 8 hectares of woodland, water courses, cycle tracks, superb sculptures and artwork, the site is set to put the town firmly on the map in terms of quality urban landscaping and regeneration. It shows just what can be achieved by transforming a derelict former industrial wasteland to create this unique environment by bringing together developers, artists, the local authority and a community woodland.

The Tees Forest is happy to be a part of this landmark development and to help play a part in its future. In the first instance we will deliver a range of events and activities on the site. These include a 5 kilometre trail race on a Thursday evening in July and a story telling event in August as part of the 'Tales from the Tees' story telling festival featuring theatre performances, music and storytelling workshops. What better backdrop could there be to stage these events?

The venue forms an ideal location for healthy outdoor activities including walking, and as such we are pleased to be involved with and support the Darlington walking festival to be held on 9th and 10th July on the site. Thus the way is already set for WestPark to contribute significantly to the community infrastructure and the cultural heritage of the town. The finish line is now in sight! Well done to all concerned.

**Contact the Tees Forest on 01642 300 716 for further information.**



Homebuyers seeking more information on WestPark should contact the two sales offices on site. Contact Bellway's sales advisor Jan Pounder on 01325 363531 for Forest Green or Clare Hill and Val Andrews on 01325 468382 for WestPark. The sales offices are open seven days a week from 10am until 5pm, late night Thursday or go online and visit [www.bellway.co.uk](http://www.bellway.co.uk).



# Showhomes now open.



## West Park, Darlington. SHOWHOMES NOW OPEN.

A superb new development of apartments, 3 storey townhouses, 3 bedroom mews style homes and 4 and 5 bedroom detached houses.

It's the ideal community in the perfect location. West Park is conveniently situated close to Darlington and the A1, but is surrounded by farmland and extensive public parks. A new school, shops, doctors' surgery, rugby club and other amenities are set to make this model community even more desirable.

Each home offers everything you would expect from Bellway and more.

Tel: **01325 363531** or **01325 468382**.

Open 7 days 11am - 5.30pm. Late night opening Thursday until 8pm.

Photography - typical Bellway properties.

FABER MAUNSELL | AECOM

## Delivering Success to West Park



Building  
Environment  
Transportation  
[www.fabermaunsell.com](http://www.fabermaunsell.com)

**bhp** Blackett Hart & Pratt Solicitors  
caring for you & your family

supporting the **westpark** development

**"easy to get on with"**  
BHP client feedback from Legal 500, 2004, an independent comparison of UK, and European law firms.

Regardless of who you are or what you do, if you are looking for a law firm that takes your language, where you are the centre of attention, then look no further.

We are delighted to continue to act as sole legal advisers to Bussey & Armstrong Ltd in relation to the Darlington West Park development.



To find out more about our commercial or private client legal services call us on 01325 488794 or visit our website at [www.bhp-pp.com](http://www.bhp-pp.com). Westgate House, Fawcetts, Darlington, DL3 3HP (opposite Vireo Park)

Regulated by the Law Society. Authorised and regulated by the Financial Services Authority.

## Blackett Hart & Pratt backs local environmental initiative

BLACKETT HART & Pratt Solicitors (BHP), the North East's leading regional multi-disciplinary law firm has given its backing to Tree Appeal, an environmental initiative backed by environmentalist Professor David Bellamy and the Wildlife Trust.

Through Tree Appeal, launched by Fountain Associates, a County Durham based marketing and print company, a tree is planted for every 10kg of print delivered on behalf of their customers.

To date Blackett Hart & Pratt have planted 25 broad-leaved trees in the local area since their involvement last year.

Bryan Hoare, Head of Marketing at BHP commented, "We are delighted to be assisting Fountain Associates with Tree Appeal. The ability for us to help deliver local biodiversity in this way allows us to put something back into the local community."

Blackett Hart & Pratt were recognised for their contribution at a recent gala evening held at Darlington Football Club.

Professor Bellamy added, "I believe Tree Appeal is a very exciting initiative because it gives companies the opportunity to make a real difference. These broad-leaved trees make a significant long-term contribution to the environment. Tree Appeal has my best wishes for the future and I look forward to many more Tree Appeal celebration evenings".

**IDDISON DODD & PARTNERS**

Chartered Quantity Surveyors  
Building Cost Consultants

- Estimating/ Cost Modelling
- Procurement Advice
- Tender Documentation
- Management of Financial Risk

27 Woodhill Road, Darlington, Co. Durham DL3 7BW  
Tel (01323) 467466 Fax: (01323) 361971  
E-mail [info@ipdsurveying.co.uk](mailto:info@ipdsurveying.co.uk)

## Anderson Ellis Partnership

60 Ditch Street, Darlington, County Durham, DL3 7JH  
Tel: 01325 430333 | Fax: 01325 430336 | E-mail: [andred@andersonellis.co.uk](mailto:andred@andersonellis.co.uk)

Architect to Bussey Armstrong Homes Ltd.  
At West Park Development

Other recent developments for Bussey Armstrong Homes Ltd include the award winning Woodlands Estate, Hinkley Park, Leconfield, Cottingham, New, Hill Garth Cookerton and Orilton Close Darlington.

*"the personal touch"*

As Landscape Architects on this West Park Development, we wish the scheme every success in the future.

Landscape Design • Urban Design • Masterplanning  
Architecture • Environmental Science • Ecology  
Planning & Transport • Tourism • Recreation & Parks

Contact Andy Doherty  
or Andy Mackenzie  
on 0191 386 7229

RPS  
RPS  
RPS  
RPS

**BES** "We are pleased to be associated with the West Park development"

With direct multi-disciplinary technical staff involvement, commitment is given to management controls, ensuring all projects are carried out to our Quality Assurance Standards.

With a diverse client base, BES are equipped with all necessary in-house facilities to ensure to provide a complete service.

Mechanical & electrical  
building services designers  
and project managers



Head Office: 48-50 Brindley Row, Darlington, Co. Durham DL3 7JH  
Tel: 01325 344444 | Fax: 01325 344477 | E-mail: [info@bes.co.uk](mailto:info@bes.co.uk)

# Join the club

Bringing business and arts together

Creativity in business workshop with artist Gilly Rogers.



CONGRATULATIONS to WestPark – a fantastic example of how business and arts can work together to create something new that benefits everyone involved. The Sponsors Club for Arts & Business is delighted to have been part of the project.

WestPark is one of a range of projects across Darlington and the region where the Arts & Business New Partners programme has been able to invest to help businesses try something different, from a Winter Wonderland at Northumbrian Water's Leaplish Centre at Kielder to Arts For Everyone in the shops along Linthorpe Road in Middlesbrough.

Business invests over £4million each year in arts and culture in the North East, so if your business is interested in being creative come and talk to us.

Find out more from our website  
[www.sponsorsclub.org.uk](http://www.sponsorsclub.org.uk)  
or please give us a call on 0191 222 0945.

The Sponsors Club  
for Arts & Business

# Enterprise in construction

## North East and Cumbria



IN 2005 CITB-ConstructionSkills linked with North-East based building and civil engineering company Bussey & Armstrong Ltd to encourage young people attending school in Darlington, to consider a career in the technical and professional roles in the construction industry. Many of Bussey & Armstrongs employees, who were in professional and technical roles, had attended the local schools and the company was keen to show a new generation of school children what opportunities were on offer.

'Enterprise in Construction' was rolled out in four schools in Darlington. Aimed at year 9 and 10 pupils studying Design and Technology, the four to six month project was integrated into the Graphic Products part of Design and Technology GCSE.

The project starts with the young people forming a mini construction company, they have to investigate what roles there are in construction – many are surprised at the number of people involved in a project before you even get on site.

Next the pupils must identify a potential site for development in the local area, in this case it was the WestPark Development, to decide what they will build, conduct market research and formulate some initial designs.

The final stage is the completion of the designs, creation of an architectural model

and a presentation of the scheme to a judging panel.

Every step of the way there is support from the industry, CITB-Construction Skills has links with local surveyors, architects and planners so that schools can invite them in to give an insight into their aspect of the building process. In addition a construction mentor from the construction industry is on hand to answer questions as they arise. The project develops team working and pupils' key skills and teachers report an increase in pupils' motivation.

Kate Eldon, CITB-ConstructionSkills NE and Cumbria Careers Coordinator thinks that the project has had a very positive effect on young people's perceptions of the industry, she says: "A colleague was at a careers event in the region when he was approached by half a dozen girls interested in careers within the industry from planner to site supervisor. He was taken aback at their enthusiasm and asked how they knew so much about the industry. All the girls had been involved in the 'Enterprise in Construction' project. It is encouraging to find out second-hand that we are opening up a whole new range of opportunities to young people who

may never of known what construction had to offer."

Keith Holyman, Head of Design and Technology at Hummersknott School, which participate in the project agrees that it has benefited pupils' learning. He said: "Pupils have gained immensely from the project, especially the section on scale drawing and modelling, usually a difficult concept to grasp, but obviously essential to this challenge. They worked as a team and coped quite well with the time restraints, although there was the usual rush to complete models at the end. The engineer assigned to us was also a great influence and the pupils interacted with him, as he was able to add that extra dimension of construction site visits and in depth knowledge."



# Caring, sharing, daring



WESTPARK IS A unique development for Darlington and the North-East. Based around the first new park in the town in one hundred years, it brings together a new community – housing, school, hospital, pub, rugby club – but a community with a difference.

WestPark's main developer, Tony Cooper of Bussey and Armstrong Projects, has ensured from the outset that public art is built into every aspect of this development. Texts and sculptures exploring the ecology of the site and the history of Darlington are placed around the park and throughout the surrounding buildings. Artists involved in the main park include poet W.N. Herbert, sculptor David Paton, and blacksmith Brian Russell. The WestPark arts strategy was developed by Matthew Jarratt at Commissions North, Arts Council England, North East, and Wendy

Scott at Darlington Borough Council has managed the commissions. New Writing North has delivered a poetry led education programme with four Darlington schools.

Start in the central amphitheatre and you encounter three definitions cut into steel focusing on principles at the heart of every community: caring, sharing and daring. Look beyond to the monumental Trinity Stones and you find haikus about rare animals which, have found a safe habitat in the park: the dingy skipper butterfly, the little ringed plover, and the water vole. Cross the bridges and you find sonnets about Darlington's industrial heritage, in particular the contribution of the Quaker dynasty, the Peases.

From common principles to protected wildlife to historical figures, the connections are there for you to explore.

## Caring

The new hospital provides priority services care for the local region. Its architects have incorporated themes from WestPark, and so the hub corridor recalls the park's central steel circle. The artworks provide points of meditative calm for both patient and visitor. They are designed by sculptor David Edwick and glass artist Bridget Jones from texts by Bill Herbert.

Three smaller sculptures, based on the simple motifs of sun, egg and apple, are echoed in the distinctively shaped central piece. The accompanying text takes you on a reflective journey around the hospital, including a pause before the glass in the multi-faith chapel.

## Sharing

The new school and housing are WestPark's lifeblood, and here artworks have found both old and new inspirations. Writer Kitty Fitzgerald worked with pupils from Alderman Leach Primary School and artist Bridget Jones to construct 'Story Doors' into the school courtyard. There is a new sculpture by David Paton and a new school motto.

Bill Herbert has named streets as new houses go up, basing each section on key elements in Darlington's heritage. The birth of the railways, innovations in animal husbandry, and agricultural inventions – the town's pioneering role is commemorated in couplets on the new street signs.

## Daring

The rugby club completes the trio of principles, which lie at the heart of WestPark. Darlington Mowden Park RFC will move into new premises incorporating a light sculpture based on the park's Trinity Stones. This will be visible at night from the nearby motorway, helping to establish WestPark's role as a gateway to Darlington.

WestPark was honoured with the 2004 gold award for sensitivity in regeneration by the Royal Institute of Chartered Surveyors. For more information on WestPark visit:

[www.westparkdarlington.com](http://www.westparkdarlington.com),  
[www.commissionsnorth.org](http://www.commissionsnorth.org)

**SEYMOUR**  
Civil Engineering Contractors Ltd.

One of the North East's foremost independent Civil Engineering Contractors

Seymour take pride in their competitiveness and the quality of service provided to our clients and their customers. Our proven track record of delivering projects to time and budget with our flexibility ensures that we develop relationships with our clients to match their needs and aspirations. We look forward to being given the chance to show you what the benefits being experienced by our current clients.

Land Reclamation      Ports, Harbours and Sea Defences      Urban Renewal

Environmental Improvements      Mwin Drainage      Development Infrastructure

**We build Relationships as well as Projects**

Seymour (Civil Engineering Contractors) Limited  
30-34 Navigation Point, Hartlepool, TS24 0UG  
Telephone: (01429) 200021 Fax: (01429) 882904  
enquiries@seymourcivil.co.uk

## Come and share your vision

OVER THE past 12 months St Mary's Church Cockerton has been working with the developers, Bussey & Armstrong, to create a centre for the community in WestPark. Interest and ideas from those living, or planning to live, in WestPark, Faverdale and High Grange are welcome, so that the centre and its activities enhance the benefits of living here.

We are planning for the centre to be near the new school and the village area, but we have not decided on the details or its scope. St Mary's, along with other churches, wish to work with you in this exciting opportunity. Your vision could be shared and prioritised with those of others to plan a centre which caters for a variety of activities. Some which have been discussed cover areas such as leisure and learning opportunities, a computer facility, a library, activities for children and young people, group rooms and gymnastics. St Mary's is dedicated to serving the community, reflecting on the range of needs and working to support others.

- Come and talk
- Share your ideas
- Tell us what you think
- Don't miss this opportunity

**Consultation meetings will be held during July please contact Rodger Sansom, Project Development Officer, on 01325 367908 or email: [rodgersansom@btconnect.com](mailto:rodgersansom@btconnect.com) for further details.**


LOCOMOTION WOULD HAVE BEEN THE FIRST

## WestPark Levy Fund update

THE WESTPARK Levy Fund managed by County Durham Foundation is now operational. Homeowners who completed before 1st February 2005 have already made their first payments and others will follow throughout the year. Once all 700 homes on the development are complete, the levy will generate approximately £35,000 a year to support community and environmental initiatives in WestPark.

County Durham Foundation will be working with the developers Bussey & Armstrong and Darlington Borough Council plus local residents to distribute the funds. It will support non-statutory environmental improvements including landscaping, interpretation and management facilities, community and arts projects plus a Countryside Rangers Service in the WestPark area. Darlington Borough Council will cover the day-to-day maintenance costs of the park.

**A meeting will be held in the summer for residents and other stakeholders to find out more about the Fund. Further details will be sent directly to householders. If you are interested in joining the WestPark Committee, please register your interest by contacting Melanie Caldwell, County Durham Foundation on 0191 383 0055 or Email [mel@countydurhamfoundation.co.uk](mailto:mel@countydurhamfoundation.co.uk)**



**Success Incorporated**

As Chartered Surveyors we advise Bussey & Armstrong Ltd on West Park Village in respect of Land Acquisition and Valuations, Agency advice on all Lettings, Land Sales and Management. We are proud to be sole property advisors involved in this most important mixed use Gateway Development to Darlington and the Tees Valley.

For further information relating to the opportunities at West Park please contact: Andrew Wilkinson 01692 870870 email: [andrew.wilkinson@sandersonweatherall.com](mailto:andrew.wilkinson@sandersonweatherall.com)

[www.sandersonweatherall.com](http://www.sandersonweatherall.com)

Leeds	London	Newcastle	Manchester	Tamworth
0113 289 6000	020 7890 8000	0191 581 5671	0161 615 7000	01692 870 870

**Sanderson Weatherall**

**BRIAN RUSSELL AT LITTLE NEWSHAM FORGE  
ARTIST BLACKSMITHS**

Designers and makers of West Park bridges.

Contact Brian Russell Phone: 01633 660547  
Fax: 01633 660792 | Email: [brian@brianrussell.co.uk](mailto:brian@brianrussell.co.uk)





# Leconfield

## Cleveland Terrace - Darlington

**A truly unique development of Arts & Crafts inspired high quality, high specification town houses and apartments.**

*Townhouses from around £439,950*

*Apartments from around £276,950*

## Showhouse now open

### An exclusive development

Leconfield is an exclusive development by Bussey & Armstrong Homes. Set in the West End of Darlington yet within easy walking distance of the town centre. Offering a choice of Town House, Detached Homes and Apartments, it gives families, couples and individuals the ideal place to enjoy life.



Illustration  
March 2011

For all sales information contact the sales office  
Thursday to Monday 11.00am - 5.00pm  
Tel 01325 365 717 / 462 137

**Bussey & Armstrong Homes**  
[www.busseyarmstrong.co.uk](http://www.busseyarmstrong.co.uk)



  
westpark

A selection of new homes available in 2006 built by Bussey & Armstrong.  
From 1 bedroomed apartments to 5 bedroomed town houses.

Visit our website [www.busseyarmstrong.co.uk](http://www.busseyarmstrong.co.uk) for further details  
or Tel: 01325 365 785



**Bussey & Armstrong Projects Limited**

Brinkburn, 147 Brinkburn Road

Darlington, Co. Durham DL3 8LA

Tel: 01325 365 785 Fax: 01325 382 604

E-mail: [info@busseyarmstrong.co.uk](mailto:info@busseyarmstrong.co.uk)

[www.busseyarmstrong.co.uk/projects](http://www.busseyarmstrong.co.uk/projects)