

At the heart of a new community

# westpark



Creating a  
safe and vibrant  
community

Public art  
Maintaining West Park  
Forthcoming events  
Park Rangers  
West Park Hospital  
Rugby Club

**Bussey & Armstrong Projects**

# Welcome!

The transformation of West Park from derelict wasteland to a thriving, sustainable community for the future continues to be, quite simply, breathtaking

Just six years ago West Park was a 120 acre mix of industrial wasteland and farmland. Reclamation and landscaping works were completed in 2002 and now an ambitious ten year regeneration plan is well underway.

Completion of the West Park Village centre was a milestone last year with the opening of the new Cooperative store, The White Heifer That Travelled, Rowlands Pharmacy and a Dental Surgery. A new hair and beauty salon, continental style café and children's nursery are all set to follow soon. The village centre apartments are now being occupied and the area is taking on a lively, vibrant feel.

It was the icing on the cake when our development scooped the coveted Royal Institution of Chartered Surveyors Award for Regeneration in 2005 and the village centre has been short listed for three categories this year. Also we are proud to announce we have won another award – The Local Government Chronicle Sustainable Communities Award in conjunction with West Park Hospital and Darlington Borough Council.

But that said, we know we cannot allow ourselves to become complacent – and there is still much to do if we are to achieve our ambition of a sustainable community for generations to come.

Later this year we plan to open a new cycle way and footpath link between the village centre and West Park Hospital. In the meantime our new residents group, the Friends of West Park, continue their hard work and new members are always welcome. The group unites local residents with representatives from Darlington Borough Council and Bussey and Armstrong Projects, giving local people a voice in the future of West Park. You are welcome to be part of the creation of this new community and find out where the levy goes! And there's more good news. After several false starts, Darlington Mowden Park Rugby Football Club are expecting to start development on the adjoining site, with plans to open their new state-of-the-art Rugby Club Centre in 2008.

**TONY COOPER**  
Director, Bussey & Armstrong Projects

For more information on other services and residential opportunities at West Park please explore our website at [www.busseyarmstrong.co.uk](http://www.busseyarmstrong.co.uk)

## Creating a safe and vibrant community

Bussey & Armstrong's West Park development in Faverdale, Darlington, is both unique and inspirational

Plans are in place to include a further 425 homes, a doctors surgery, a childcare centre and a new home for Darlington Mowden Park RFC at the innovative West Park development at Faverdale, Darlington.

Already the development is home to West Park Hospital, a £20m Priority Services NHS hospital, 275 new homes, Alderman Leach Primary School and The White Heifer That Travelled, a traditional family pub which are all surrounded by West Park, a stunning public park opened in 2005.

Local Darlington developer Bussey & Armstrong Homes secured outline planning permission for the site in February 2001 and has now gone on to create a Community Village that is both unique and inspirational!

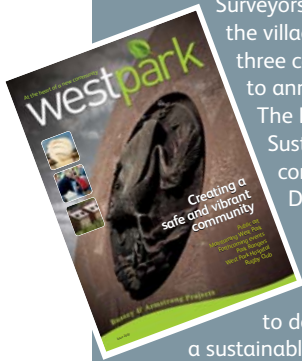
The £7m West Park Community Village is now close to completion with 21 luxurious apartments now available for buyers to take advantage of all the local amenities.

Bussey & Armstrong's innovative approach to the development has included using materials that would improve with age. This forward-thinking approach included materials such as copper roofing and locally sourced Catcastle stone, which is a beautiful full rich colour.

Working together with Browne Smith Baker Architects, the design team has challenged conventional concepts on modern contemporary design living, with areas such as the courtyard building which will be at the very heart of the community and will be lively by day and, thanks in part to the neon feature lighting, become a striking place at night.

The growing new West Park development has already won several prestigious awards including the RICS Gold Award for Regeneration and, last year, The LCG Sustainable Community Award.

The flagship development is now the talking point for developers and architectural bodies throughout the





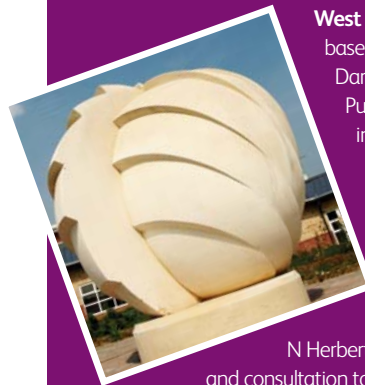
country. The architecture, inspired by the late 19th century Arts and Crafts movement, refers back to the highlight of this period of the town's history drawing at the root of Darlington's Quaker beginnings.

The Arts and Crafts movement celebrated a return to the more artisan craftsmanship of medieval times, with a greater appreciation of local materials and craftsmanship.

The development is filled with inspired artwork derived from the town's rich industrial and environment heritage.

"The West Park Village project is designed to be at the heart of the West Park community. We are delighted with the new project which has already attracted the new supermarket, traditional pub and many other retailers to create a safe and vibrant community.

## Public art



**West Park** is a unique development based around the first new park in Darlington for over 100 years. Public art has played an important role in West Park after Bussey and Armstrong Projects ensured it was included from the outset in every aspect of the development.

Nationally acclaimed poet W N Herbert undertook extensive research and consultation to create the Public Poetry Plan 'Caring, Sharing, Daring' for the area. The resulting poems and texts were carved, sculpted and built into numerous artistic features across the West Park development.

Local sculptor David Paton was commissioned to produce the inspirational stone and steel features, which can be seen from the A1 and the surrounding area. Sculptor David Edwick developed sculptures for the new hospital site based on the theme sun, egg and apple, which provide places of calm for patients and visitors. Local glass artist Bridget Jones also produced beautiful glass screens for the hospital and school.

In June 2006 the World Summit on Arts and Culture, which focuses on the role that arts and culture play in regeneration, was held in the North East at The Sage Gateshead. During this summit delegates were offered the opportunity to attend tours to the North East's 'cultural treasures', which included Darlington's award-winning West Park development.

During this visit W N Herbert inspired delegates with the fascinating research he undertook, which culminated in the street names and the school motto at West Park. They experienced all of the cultural aspects of the park, and were given a tour by well-respected historian, George Flynn who described David Paton's monumental sculptural features, which have been incorporated into the park. This tour received very positive feedback and provided the opportunity to show delegates this excellent example of arts led regeneration.



## Information

For further information on Public Art in Darlington or to send your suggestions of what arts activities you would like to see at the Open Day at West Park on Sunday 5th August, contact:

**Julie Brewis, Visual and Public Art Officer,  
Darlington Borough Council**  
Email: [Julie.Brewis@Darlington.gov.uk](mailto:Julie.Brewis@Darlington.gov.uk) or  
Tel: 01325 348845

Brian Russell at  
Little Newsham Forge  
ARTIST BLACKSMITHS

*Designers and makers  
of West Park bridges*

Contact Brian Russell on  
Tel: 01833 660547  
Fax: 01833 660732  
Email: hotsteelbrian@aol.com



**IDDISON  
DODD  
&  
PARTNERS**

Chartered Quantity  
Surveyors

Building Cost  
Consultants

Providing Quantity Surveying Services  
for Bussey and Armstrong Projects on  
West Park Community Village

27 Woodland Road, Darlington, Co.Durham DL3 7BW  
Tel: (01325) 467466 Fax: (01325) 381971  
E-mail: info@ipdsurveying.co.uk



**smile@westpark**

New state-of-the-art dental studio

- Caring professional team led by Diane Riley
- 25 years experience
- Comprehensive and cosmetic dentistry
- New patients now being accepted
  - Private and Denplan (monthly plan average cost £16)
  - BDA and Denplan Excel Accredited
  - Open 6 days a week



Tel: 01325 480300 [www.smile-at-westpark.co.uk](http://www.smile-at-westpark.co.uk)



# co-operative

West Park Village

we're **fresh**  
we're **local** and  
we're **different!**  
open everyday **7am-10pm**

Your Community Retailer

[www.cooperativeoffers.com](http://www.cooperativeoffers.com)

# Your West Park

Maintaining West Park takes a lot more than one person, it takes a whole community, your community

**West Park** is entering its fourth year as a completed site and already it is beginning to look like a well established park and nature reserve.

The site is very well used and the Council's Countryside Team has worked hard with the newly established West Park Friends Group and the North East Community Forest to put on a comprehensive events programme aimed at letting more people know about the site. The events that have been staged include activities such as, willow weaving workshops, willow sculpture making weekends, another very successful Halloween event in the dark, a summer fayre as well as a visit by international delegates to a world cultural summit.

Other features that are being developed include the new bike track that is going to receive a lot of interest. The track will be run in conjunction with the Council's Sports Development Team and other community partners such as CABLE and the



West Park Friends Group. It will have a dedicated part-time officer working on the track, running training programmes on sports

cycling, working with local schools to help them learn about the various sports associated with mountain biking and a whole lot more.

## West Park organisations

West Park has a number of organisations that endeavour to maintain the park for future generations. The main organisations are Darlington Borough Council, North East Community Forests (NECF) and the Friends of West Park Group.

West Park is a community-based park with many of the residents taking an active role in the looking after of the park. The 'Friends' established their own group to discuss any problems they have, what events they would like on the park and how to improve it.

NECF has a work team who does a lot of the maintenance on West Park. The volunteers of NECF work closely with Darlington Borough Council to make sure the park is maintained to a high standard and also help out at events.

West Park Hospital would like to become a part of the wider community. There is a gardening club that meets once a week. At the moment, this is inside the hospital but they will be actively working on the site eventually which will prepare the patients for returning into the community.

Another aspect of the work done with the hospital is that the physiotherapy department and the ranger take patients out walking. This activity helps the patients to interact with other people and also helps them become more interested in nature.

So to maintain West Park, it takes a lot more than one person – it takes a whole community.

## West Park wildlife

Throughout the year there has been an increasing presence of wildlife on West Park. In the summer, there are numerous butterflies dancing across the wildflower meadows, whereas dragonflies and damselflies add a spot of colour to the ponds.

There are 13 species of butterfly that have been seen on West Park in the summer including:

**Common Blue, Painted Lady, Meadow Brown and Small White.** There have also been sightings of less-common butterflies for example, the **Clouded Yellow** and the **White-Letter Hairstreak.**

There have been altogether six different dragonflies and damselflies, which includes the **Southern Hawker dragonfly, Common Darter dragonfly, Banded Demoiselle damselfly and Common Blue damselfly.**

There are about 33 different bird species that have made West Park either their permanent home or are occasional visitors. **Blackbirds, Blue Tits, Great Tits, Pied Wagtails, Robins, Long-tailed Tits and House Sparrows** are just a few birds that have taken up residence on the park. There has also been one off sightings of a **Buzzard, a Kingfisher and a White Pelican.**



At the moment there aren't many signs of mammals on the park. A bat (Pipistrelle or Daubenton's) was seen by a member of NECF's work team, flying low over the SNCI pond. Also a fox has been seen twice on the park, which is a good sign as they are moving out of the town and into the park. But one of the best sightings is that of the **water vole.** The water vole was one of the species found on the original site with the **Dingy Skipper** and the **Little-ringed Plover.** So it is encouraging that it has been spotted and hopefully in time the **Dingy Skipper** will return to the park. The only mammal that has definitely made West Park its home is the rabbit.

## Comments from the public

West Park's public events were well attended by the local community who were extremely positive about what was taking place – and about the park in general.

Parents were thrilled with the Halloween entertainment and expressed their delight that something had been provided for local children.

The Winter Wander also received its fair share of positive comments, with one walker remarking that it was a great way to meet new people – and wondered when the next one would take place!

The general consensus of opinion was that the park had much to recommend it with many interesting areas to explore. Again parents felt that it was an excellent environment for their children and offered more than a normal play park.

## For further information:

Rob George, Principal Countryside & Rights of Way Officer, Darlington Borough Council. Tel 01325 388627  
email: [Robert.George@darlington.gov.uk](mailto:Robert.George@darlington.gov.uk)





As a local building contractor, we are proud to be involved in this unique prestigious development in Darlington. Having successfully completed the construction of the Community Village, we are now reviewing other residential schemes within West Park and looking forward to further involvement.



Wooler Street, Darlington, Co. Durham DL1 1RQ  
 Tel: (01325) 352109 • Fax: (01325) 488146  
 Email: sales@blackburnmarshallconst.co.uk



## The White Heifer That Travelled West Park, Darlington 01325 462464

- Great food served all day everyday •
- Families Welcome •
- Fine Cask Ales •

Present this voucher when you buy any full priced main meal from our menu or specials boards to receive either a free starter or dessert

### Customer Details

Name \_\_\_\_\_  
 Address \_\_\_\_\_  
 Phone Number \_\_\_\_\_  
 Email \_\_\_\_\_

Not to be used in conjunction with any other offer. Only one voucher to be redeemed per customer. Voucher can only be used once and only in the outlet specified. Offer valid until 30.05.08. Marston's reserve the right to withdraw the offer at any time. Voucher redeemable Monday to Friday excluding Bank Holidays.

## Browne Smith Baker Architects and Masterplanners working with Bussey and Armstrong at West Park

Browne Smith Baker provides creative ideas for buildings and land that add lifetimes of value to built environments like the exciting West Park development by Bussey and Armstrong Projects.

Since the inception of the project in 1999, we've worked in partnership with Bussey and Armstrong Projects to deliver Masterplans for West Park and its Community Village. Browne Smith Baker also designed the Community Village Square building and proposed Darlington Mowden Park Rugby Club (pictured right).

We hope the results testify that we've listened carefully to Bussey and Armstrong to prepare rewarding and socially responsible architectural solutions combining creativity and technical expertise. Our aim has been to bring flair and thoughtful commitment to the West Park initiative.

We promote energy efficient, sustainable building methods and materials selected from renewable sources.



[www.brownesmithbaker.com](http://www.brownesmithbaker.com)

Tel: 01325 462345 | Fax: 01325 381419  
 1st Floor, Morton House, Morton Road, Darlington DL1 4PT



## Forthcoming events at West Park

### ORIENTEERING ADVENTURE

Wednesday 30th May (1-3pm): New orienteering course on West Park. Booking essential. Tel 01325 388648.

### NATIONAL VOLUNTEER WEEK

During this week, come along and try one of our short taster sessions on countryside volunteering opportunities in Darlington (2-4pm).

Mon 4th June: Practical work with the Ranger

Tues 5th June: Be a Volunteer Ranger at Drinkfield Marsh

Wed 6th June: Footpath monitoring with the Rights of Way Team

Thurs 7th June: Practical work/monitoring with the West Park Ranger

### BEAUTIFUL BUTTERFLIES

Wednesday 25th July (1-3pm)

Short walk around West Park to see the different varieties of butterflies. Then why not create your own flying butterfly to take home.

### WEST PARK OPEN DAY

Sun 5th August (1-4pm)

Come to West Park for its annual Open Day

### REMARKABLE ROCKETS

Wed 15th August (1-3pm)

Decorate your own rocket and see how high it goes. Bring an empty two litre plastic bottle.

### SEED GATHERING WALK

Sun 14th October (10.30am)

Join the Ranger on a three mile walk to gather seeds that will be used to grow trees for West Park.

### SPOOKS IN THE COUNTRYSIDE!

Wed 31st October (6.30-8.30pm)

Come to West Park for this Halloween event with ghostly activities. Bring a torch or lantern.



Top left: Small tortoise-shell butterfly  
Top right: Kite workshop  
Bottom left: Tidying up cuts made by vandals  
Bottom right: Southern hawk female

# A day in a life of a Park Ranger

By **Philippa Smaling**, West Park Ranger

The day normally starts off with, unfortunately, office work. Once the office work is done and you have collected the tools for that day's work, it's off to the park.

Being a ranger means that there are a lot of different things to be done. Depending on the tasks, the work can involve an inspection of the site to make sure that everything is as it should be. This is best done on a Monday and then sets out the rest of the tasks needed for the week ahead. Also on a Monday, a litter pick of the site is required after the weekend. The work that has been done on the park has ranged from maintaining the vegetation to surveying the flora and fauna. The maintenance of the park is paramount for the public's enjoyment of the park. This can include checking the water levels of the ponds, making sure the paths haven't washed away and cutting down wind damaged trees, don't worry they will grow back. For the larger tasks, such as pond clearance, fencing and grass cutting the NECF work team (a group of hardy volunteers) lend a hand.

There is also survey work carried out on the park to see which creatures inhabit West Park. West Park has an array of birds, butterflies, dragonflies and creepy crawlies, which are great for children to do mini beast hunts and pond dipping. Although chasing after butterflies does get you some interesting looks from the public, but it is worth it when you finally track the butterfly down.

There are also the days when we also work with West Park Hospital. The work with the hospital is to help the patients with their self-esteem and become a part of the community through gardening and also nature walks with them.

After noting down the number of visitors to the park, then it's back to the office to complete the day.

#### For further information:

Philippa Smaling, West Park Ranger. Tel: 01325 484949  
Mob: 07738 234350  
email: psmailing@necf.org.uk

## West Park Fund update

The West Park Levy Fund managed by County Durham Foundation is now in its third full year of operation. The long term aim of this fund is to make £35,000 per year available to be spent by a committee run by local people. Money generated from the Levy is used to support community and environmental initiatives in West Park for the benefit of residents and local people. All homeowners should have already received information from County Durham Foundation regarding payment of the Levy currently set at £50. In addition, commercial properties are subject to an increased Levy.

County Durham Foundation are a local independent charity that deal with all administration of the West Park Levy Fund, including collection and distribution of the money and monitoring the effectiveness of the programme. The Levy is an independently managed fund and is not part of Darlington Borough Council.

County Durham Foundation's Chief Executive Gillian Stacey explains their involvement in the programme; "Many larger scale developments have struggled to create a community identity and engage residents. This approach will help to foster a real community spirit. We are delighted to be involved."

Friends of West Park meetings are currently taking place and all residents are encouraged to find out more. Please contact Philip Roxby of Darlington Borough Council on 01325 388637 for details. If you would like more general information about the Levy, contact Melanie Caldwell, County Durham Foundation on 0191 383 0055 or email [mel@countydurhamfoundation.co.uk](mailto:mel@countydurhamfoundation.co.uk)



## At the heart of a community

There are many definitions of community – the thesaurus states several including association, residents neighbourhood, society and village all of which could be used to describe the whole West Park concept. Slowly but surely there is a real sense of community coming together in this distinctive new development. This has already manifested itself in several different ways, more obviously through the ‘friends of’ group, and the hospital reaching out to engage with its neighbours, but also through the newly

formed cycling group and the friendship that arises as new neighbours get to know each other.

Hopefully this will give the impetus needed for the future care and development of the parkland, artworks and habitats, but this will not happen without the enthusiasm and dedication of individuals determined to make a real difference.

It would be nice to see more people becoming involved in the site by joining the friends group or expressing their views about its future. This in essence is what community forestry is all about, by creating the space and opportunity for people to come together and have a stake in their own local environment, the community will flourish and will be sustainable in the long-term. The Tees Forest will continue to support this wonderful vision.

### For further information:

Simon Blenkinsop, Recreation Co-ordinator  
The Tees Forest, Middlesbrough  
Tel 01642 515545  
email: [Simon.Blenkinsop@teesforest.org.uk](mailto:Simon.Blenkinsop@teesforest.org.uk)



# Bringing family values to West Park

Bellway’s West Park development in Darlington offers families an array of detached homes that are perfect for large or growing families



With four and five bedroom homes in a number of styles,

families looking for a new home can find their perfect property for the future at West Park. Prices for plots currently released for sale start from £220,000 for a four bedroom Grayling or Haworth property, or from £285,000 for a five bedroom Westwood, a design that is unique to Bellway’s North East division.



layout of this floor.

Upstairs, is a spacious living room that spans the entire width of the property and large master bedroom with en suite shower room, which is perfect for parents that want some time away from the hustle and bustle of everyday demands.

On the second floor, are three bedrooms, one of which has an en suite shower room. A luxury family bathroom completes the layout of this floor.

On the outskirts of Darlington, close to the A68 and minutes from the A1 with schools and colleges nearby,



West Park is an ideal location for any homebuyer. Once finished, this new neighbourhood will incorporate a medical centre, local shops and also a brand new adjacent rugby club. A central area of landscaped parkland and planted area complete the development, packed with more than 40,000 shrubs and trees.

Spread across three storeys, the Haworth is ideally designed to be used as a three bedroom home with a study or three bedroom home with guest room with the layout encompassing two large bedrooms that both feature en suite shower rooms. There is also the added benefit of a single garage to the property providing private parking.

Available from £220,000, the ground floor of the Haworth has a large dining room with bay window towards the front of the property, whilst towards the rear of the property is an open plan kitchen with breakfast area and French doors to the garden, which is perfect for those lazy Sunday mornings. A practical utility room and downstairs’ w.c. complete the

Homebuyers seeking more information on West Park should contact sales advisers Clare Johnson and Melanie Wilson  
**01325 468 382.**

The sales office is open seven days a week 11am-5.30pm with late night opening until 8pm on Thursdays. For more details of Bellway’s developments across the region, [www.bellway.co.uk](http://www.bellway.co.uk)





# If you love the high life, move to West Park.

**West Park, Darlington.**  
**3-bedroom properties from £175,000.**

**Bellway** 

- A recommended local agent assigned to market your present home
- You agree the selling price
- Prospective buyers are qualified before being given a viewing appointment
- Bellway does all the chasing with the estate agent to secure a sale
- You can trade up, down or sideways
- Bellway pay your estate agent fees.
- It's free of charge!



- Excellent access to the A1
- Close to the centre of Darlington
- Unique concept
- Ideal for family living



West Park on the outskirts of Darlington provides a totally unique, invigorating and exciting place to live. It's a vibrant new village style community surrounded by parkland and farmland. And in true village tradition there's a pub, new school and shops. This is an excellent opportunity combining the beauty of old style living with new design.

And with the Bellway Expressmover scheme, you could avoid the time, money and hassle of selling your existing home.

Tel: **01325 468 382**

For more information contact the sales centre.

Open 7 days a week 11.00am-5.30pm.

Late opening Thursdays and Mondays 11.00am-8.00pm.

To find West Park simply enter DL2 2FD into Multimap

\*Pictures for reference only, specification on site may vary. Prices correct at time of going to press.

**Bellway**

## Local firm expands



**Law firm** Blackett Hart & Pratt has virtually doubled the size of its operation in Darlington by extending its office in Faverdale which is located opposite the West Park development.

The regional practice has expanded into a further 5,400 sq ft of space at Westgate House taking the building to 14,000 sq ft.

The additional single-storey space, which includes offices and meeting rooms as well as a large staff car park, has been taken for current and projected expansion of a number of the firm's teams.

Anne Lane, practice manager of Blackett Hart & Pratt, said: "We moved our Darlington division to Faverdale in September 2002 and in that time have grown considerably to 65 people."

**bhp** Blackett Hart & Pratt LLP Solicitors  
caring for you & your family

**"recommended for personal tax, trusts & probate"**

Client feedback from The Legal 500, 2006, an independent commentator on U.K. and European law firms.

Whoever you are, if you are looking for a regional law firm with a quality all-round reputation that can assist you and your family to protect your assets and make the most of your savings and investments, then look no further. Blackett Hart & Pratt Solicitors are the North East's leading regional multi-disciplinary law firm. Our specialist wealth management team provide expertise to assist clients from across the region to help maximise their assets whilst also ensuring that they are protected for the future. With the additional assistance of our in-house independent financial advisers our specialist team can advise on:

- Inheritance Tax Planning
- Asset and Wealth Protection
- Making a Will
- Trust & Estate Planning
- Retirement Planning
- Independent Financial Planning

"We are delighted to continue to act as sole legal advisers to Bussey & Armstrong Ltd in relation to the Darlington West Park development."



supporting  
**westpark**  
DARLINGTON



To find out more about our wealth management expertise or other legal services call us on 01325 466794 or visit our website at [www.b-h-p.com](http://www.b-h-p.com).

Westgate House, Faverdale, Darlington, DL3 0PZ (opposite West Park).

Blackett Hart & Pratt LLP is a limited liability partnership. Regulated by the Law Society. Authorised and regulated by the Financial Services Authority.



## Children helping to enhance West Park

**Alderman Leach Primary School** has now been open for 18 months.

The school is well equipped with state-of-the-art technology and our pupils are confident and proficient when working with ICT, working on both individual laptops and the interactive white boards.

The schools position within West Park Village has given us privileged access to a unique resource. The children have regular trips to West Park to enhance and enrich the curriculum. To date, children have utilised its facilities in

lessons as diverse as art, where they produced sculpture-based on the work already there; Literacy – producing a leaflet advertising the park and its facilities; a teddy bears picnic; and regular visits for science and geography.

In the near future the school is planning to extend the use of West Park to include a range of outdoor pursuits such as orienteering.

The children are proud to come to such a new school and are keen to keep it as a showcase school as well as enhance the local environment.

**For further information:**

Alderman Leach Primary School. Tel 01325 380792  
email: [admin@aldermanjun.darlington.sch.uk](mailto:admin@aldermanjun.darlington.sch.uk)

**rowlands**  
PHARMACY

### New Pharmacy Now Open

Unit 8, West Park Community Village,  
John Fowler Way, Tillage Green, DL2 2GL

Open Monday-Friday 8.30am-6.00pm  
(closed for lunch 1pm-2pm)

- NHS & Private Prescriptions
  - Medicines
  - Homeopathic Medicines
- Wide range of other healthcare supplies & toiletries
- Free Prescription Collection Service also available

## Anderson Ellis Partnership

60 Duke Street, Darlington, County Durham, DL3 7AN  
Tel: 01325 480333 | Fax: 01325 483876 | E-mail: [architect@andersonellis.co.uk](mailto:architect@andersonellis.co.uk)

Architect to Bussey Armstrong Homes Ltd.  
At West Park Development

Other recent developments for Bussey Armstrong Homes Ltd. include the award winning Woodlands Estate, Hundens Park, Leonfield, Coniscliffe Mews, Hill Garth Cockerton and Chilton Close Darlington.

*"the personal touch"*

**BES**  
CONSULTING ENGINEERS

"We are pleased to be associated with the West Park development"

With director and professional technical staff involvement, commitment is given to management controls, ensuring all projects are carried out to our Quality Assurance Standards.

With a diverse client base, BES are equipped with all necessary in-house facilities/resources to provide a complete service.

**Mechanical & electrical building services designers and project managers**

Block 3, St Cuthberts House, Aycliffe Industrial Park, Newton Aycliffe, Co. Durham, DL5 6DL  
Tel: 01325 314114 | Fax: 01325 313547 | E-mail: [info@bes-c.co.uk](mailto:info@bes-c.co.uk) | Web: [www.bes-c.co.uk](http://www.bes-c.co.uk)



WE EMPLOY LOW CARBONCONSULTANTS

# Constructing a bright future

**Youngsters** were given the chance to talk to women already working in construction and have a go themselves.

The Women into Construction project is organised by the College and supported by CITB to promote the potential career opportunities in the craft, professional and technical construction industry.

Open to Year 9 and 10 pupils from

Darlington schools, the project comprised of a three-day programme including a site visit to Bussey & Armstrong builders at West Park, talks by female staff from Shepherd Construction and practical activities.

Shepherd Construction site management student Hadiel Farhan told the girls she found being in the minority on site was an advantage.

"I have to make sure the site is tidy and safe and that everyone is

wearing hard hats and high visibility vests. If they aren't, I have to tell the men and, because I am a woman, they are only too willing to help me get my job done." she said.

Darlington College tutor Heather Keating said: "There are some really amazing opportunities in the construction industry for both men and women. Tradesmen and professional construction staff have never been in such high demand and this will increase as the country prepares for the 2012 Olympics."

Below: Darlington students during Women in Construction project

Far left: Student Nicole Kershaw has a go at bricklaying



**For further information:**  
Heather Keating  
Tel 01325 503127  
email: HKeating@darlington.ac.uk



## Hospital at heart of West Park

**It is now over** two years since West Park Hospital opened and in that time it has become an important part of the West Park community.

One in four people in Darlington and County Durham will have a mental health problem at some point in their lives and some will need to spend time in this hospital.

Local people deserve the very best and this state-of-the-art mental health hospital is a wonderful facility. It provides a safe, homely and smoke free environment for people when they are ill.

Everyone who is admitted to the hospital will have a single, en-suite bedroom on the ground floor with easy access to pleasant gardens and a central courtyard. Staff at the hospital also run a range of day services and outpatient clinics for people from Darlington and the south of County Durham and there is a restaurant which is open to the public.

Con Egan, chief executive of Tees, Esk and Wear Valleys NHS Trust, which manages West Park Hospital said: "We are immensely proud of our hospital and pleased to be a part of the already thriving West Park development."

If you would like to know more about the hospital or the services we provide there please contact the chief executive's office on **01325 552077**



### One of the North East's foremost independent Civil Engineering Contractors

Seymour takes pride in their competitiveness and the quality of service provided to our clients and their customers. Our proven track record of delivering projects to time and budget with our flexibility ensures that we develop relationships with our clients to match their needs and aspirations. We look forward to being given the chance to show new clients the benefits being experienced by our current clients.



Land Reclamation



Ports, Harbours and Sea Defences



Urban Renewal



Environmental Improvements



Main Drainage



Development Infrastructure

**We build Relationships as well as Projects**

Seymour (Civil Engineering Contractors) Limited  
30-34 Navigation Point, Hartlepool, TS24 0UQ  
Telephone: (01429) 233521 Fax: (01429) 862504  
civils@seymourcivil.co.uk



**Kids First**  
CHILDRENS NURSERIES

**NEW NURSERY**  
Opening in Westpark

**NOW TAKING BOOKINGS**  
Opening Autumn 2007

**Book now and get first month FREE!**

- Purpose built single storey building
- Spacious, exciting outdoor areas
- Fingerprint entry system
- Healthy organic food
- Family owned business
- Outstanding OFSTED reports

**Tel: (0191) 4618877**  
**www.kidsfirst.net**





L-R: Club Development Officer, Jason Smithson, with sponsor Tony Ward of Faverdate Recycling Centre

## All systems go for rugby club

There's an old saying that all good things come to those who wait, which is exactly the case for Darlington Mowden Park RFC which is finally about to take up residence at its new home. The move from Yiewsley Drive to West Park is imminent and marks the end of long negotiations – and now it's all systems go!

The move to West Park marks the start of a new era for the club, which will be providing Rugby Union for all ages and abilities.

The appointment of former Newcastle Falcons player Jason Smithson as full time Club Development Officer is a real coup for the club and has strengthened the mini and junior sections. This appointment has only been possible because of Sportsmatch funding, where the generous sponsorship provided by FRC Ltd has been matched by this organisation.


Both the mini and junior sections are always interested in attracting new players, volunteer coaches and helpers to the game – and previous experience is not necessary.

This season we welcomed the Thirsk Sharks, a Premiership 2 side to play at Yiewsley Drive. The Sharks have a number of international players on their side and their skill and commitment highlights the huge advances made in women's rugby in recent years.

Needless to say everyone is eagerly awaiting their chance to play at West Park and to become part of the community there. Anyone interested in finding out more or who like to be among the first to use our new facilities, please don't hesitate to get in touch!

**For further information:**

The Secretary, Tel 01325 465932 email: enquiries@mprfc.com


**Success Incorporated**

As Chartered Surveyors we advise Bussey & Armstrong Ltd on West Park Village in respect of land acquisition and valuations, agency advice on all lettings, land sales and management. We are proud to be sole property advisors involved in this most important mixed use Gateway Development to Darlington and the Tees Valley.

For further information relating to the opportunities at West Park please contact: Tim Carter 01642 870870 email: tim.carter@sandersonweatherall.com

**www.sandersonweatherall.com**

Leeds	London	Newcastle	Manchester	Teesside
0113 369 6000	020 7290 6930	0191 261 2681	0161 615 7000	01642 870870



**Sanderson Weatherall**

# Making home ownership more affordable

*...become part of a new community!*



## PART BUY - PART RENT

**Ever dreamt about owning your own home but didn't think you could afford it?**

Part Buy - Part Rent is a flexible way for you to own your first home that should cost you less per month than buying the same property outright.

## West Park | Darlington

We are delighted to offer for sale 16 two-bedroom and 1 one-bedroom affordable apartments at the new West Park Village in Darlington. These individually designed and spacious apartments have been developed by Bussey & Armstrong Projects and are close to local facilities including a new primary school, shopping facilities, a Co-op, and pharmacy.

Prices range from £48,500 to £75,000 + weekly rent (two-bed apartments) and £50,000 + weekly rent (one-bed apartment).

If your take home pay is over £1,185 per month, you may be eligible for this scheme and each apartment is available on 50% share only.

**APPLY NOW**

**0191 375 3729**

Telephones open (Monday-Friday, 9am-5pm)  
or apply online: [www.threerivershousing.co.uk](http://www.threerivershousing.co.uk)

These homes are subject to nominations by Darlington Borough Council and all applications will initially be processed through your HomeBuy agent.



Your home will be at risk if you do not keep up with rent and mortgage payments or any other loans secured against your home.

*Internal photograph for general illustration purposes only.*

Show Home now open, at our new development in the West end of Darlington



Leconfield

# Cleveland Terrace Darlington

IF YOU ORDER  
YOUR NEW HOME  
BEFORE JUNE 2007,  
WE'LL PAY YOUR  
STAMP DUTY!

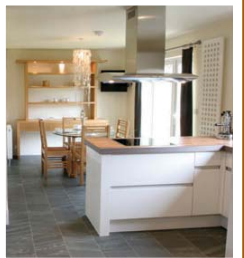
A truly unique development of Arts and Crafts inspired high quality, high specification town houses and apartments.



**Apartments**  
from **£276,950**

**Townhouses**  
from **£439,950**

For all sales info contact the sales office Thursday to Monday 11.00am - 5.00pm



**Bussey & Armstrong**  
Homes in Darlington

E-Mail: [info@busseyarmstrong.co.uk](mailto:info@busseyarmstrong.co.uk)  
Website: [www.busseyarmstrong.co.uk](http://www.busseyarmstrong.co.uk)

147 Brinkburn Road, Darlington DL3 9LA  
Telephone: 01325 365717 / 462137

**westpark**

At the heart of a new community



## Sans Pareil Square

High specification, luxurious home from **£189,950**



**Luxurious apartments  
1 & 2 bedrooms  
Prices start from only  
£110,000**

**Prices start from  
only £110,000**

For all sales info contact the  
sales office at Leconfield:  
Thursday to Monday 11:00am-  
5:00pm **Telephone: 01325 365 717**

**Bussey & Armstrong  
Homes in Darlington**

E-Mail: [info@busseyarmstrong.co.uk](mailto:info@busseyarmstrong.co.uk)  
Website: [www.busseyarmstrong.co.uk](http://www.busseyarmstrong.co.uk)

147 Brinkburn Road, Darlington DL3 9LA  
Telephone Brinkburn on: 01325 462137

...Building Homes in Darlington since 1912

## From the residents...

I have been a resident of West Park for nearly three years. Since we moved in we have watched the site continue to develop and lots of new families move in.

The kids always find something new to keep them occupied every time we go up onto the top. As a member of the Friends of West Park. I have been involved in discussing the plans and maintenance for the park, the activities that are happening in the park and more recently with supporting the bike track. My family have participated in lots of the activities such as willow tunnel making, kite making and 'bush craft' activities on the Open Day last year that were arranged.

We moved into a building site and although it is still a building site the West Park vision of a village feel is starting to develop, we have our school, shop, chemist and pub with the park at the centre. I feel that our community although in its infancy is starting to develop.

### **Heather Hebden**

Resident, West Park

**The Park** means a lot to me, its my compromise between wanting to live in the country and having to live near schools and other facilities. It's the first thing I see from my bedroom window when I wake on a morning and the sunrises are fantastic. I have seen all seasons unfold on the hill now and every season brings with its own beauty with it. I walk on the hill and across the Park every day, the view from the top is amazing on clear days and the sunsets are fantastic.'

### **Sue Pattison**

Resident, and part of the  
Friends of West Park Group



**westpark**  
At the heart of a new community

**Bussey & Armstrong Projects Limited**  
Brinkburn, 147 Brinkburn Road  
Darlington, Co. Durham DL3 8LA  
Tel: 01325 365 785 Fax: 01325 382 604  
E-mail: [info@busseyarmstrong.co.uk](mailto:info@busseyarmstrong.co.uk)  
[www.busseyarmstrong.co.uk/projects](http://www.busseyarmstrong.co.uk/projects)

Published by Cherrington Advertising Limited. Tel: 01325 304 360 Design: Paul Stephenson